

REVISION HISTORY

SCH REV	PCB REV	ECO NO.	DATE	COMMENT
- 1.0	- 1.0	-		
1.0.4	1.0	1019	6-25-02	Change U1 to B0440049 Ver 2 firmware

NOTES:


UNLESS OTHERWISE SPECIFIED:

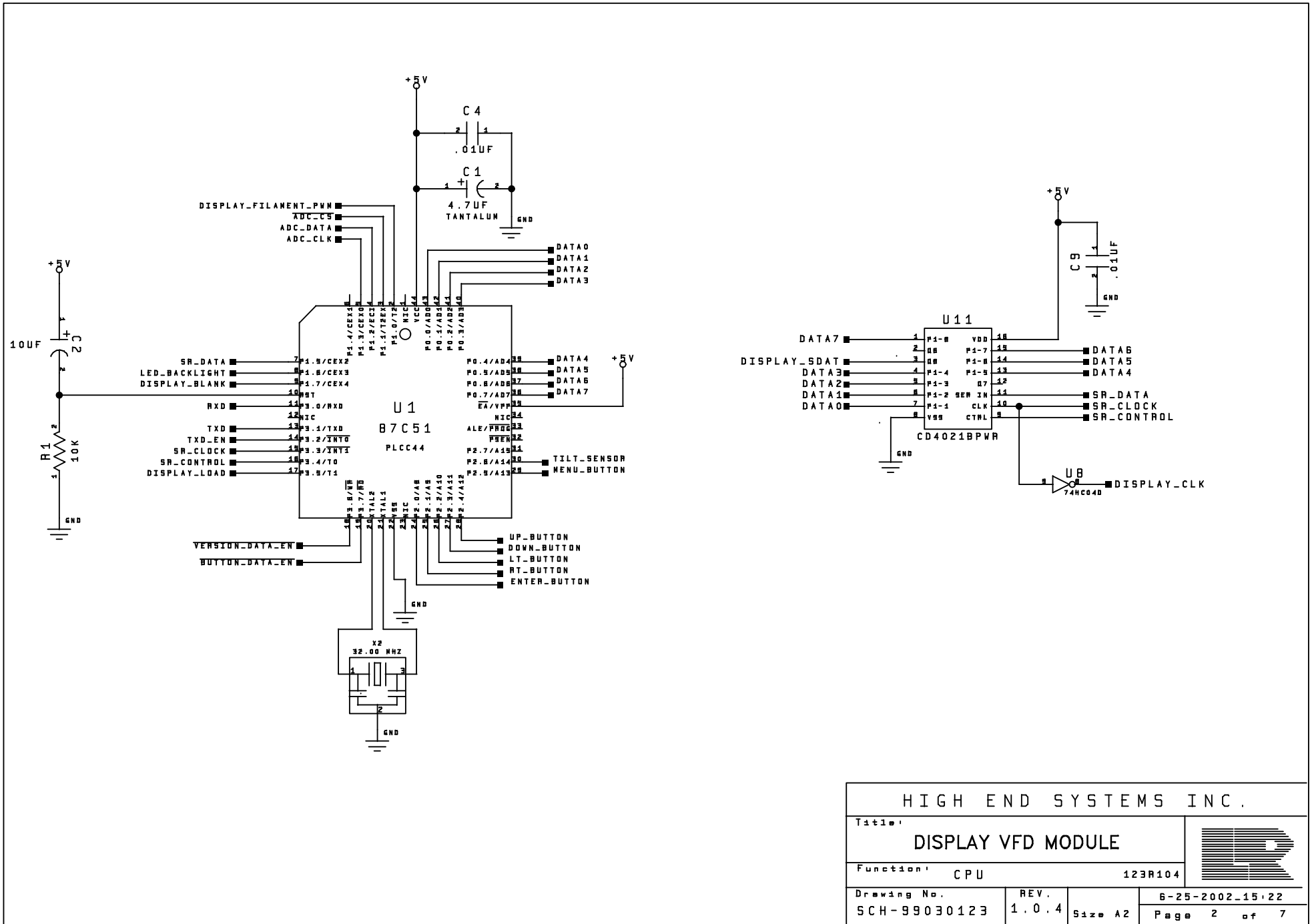
1. ALL RESISTOR VALUES ARE IN OHMS
2. ALL RESISTORS ARE 1/8 WATT 5% OR BETTER
3. CAPACITOR VALUES ARE IN PICO FARADS
4. ALL NON POLARIZED CAPACITORS ARE 50V OR BETTER
VALUES BELOW 470pF ARE NPO/COG TYPE 5%
VALUES 470pF TO 1000pF ARE X7R 10%
VALUES ABOVE 1000pF ARE Z5U +/- 20 %
5. ALL POLARIZED CAPACITORS ARE 20% OR BETTER

Copyright (c) 1994-2001 High End Systems, Inc. All rights reserved worldwide.

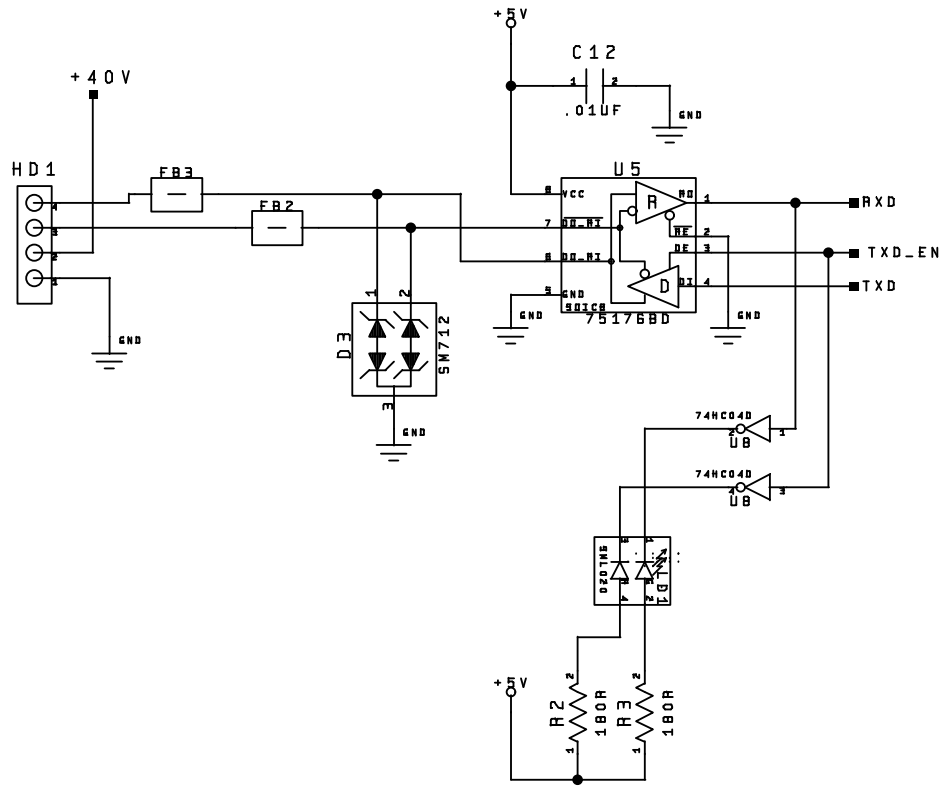
HES, Lightwave Research, the Lightwave Research logo, High End Systems and the High End Systems logo are registered trademarks of High End Systems, Inc. Trademarks and trade names of others may be used in this document to refer to either such other entities or to their products. High End Systems Inc. disclaims any proprietary interest or connection to such marks or entities.

HIGH END SYSTEMS INC.

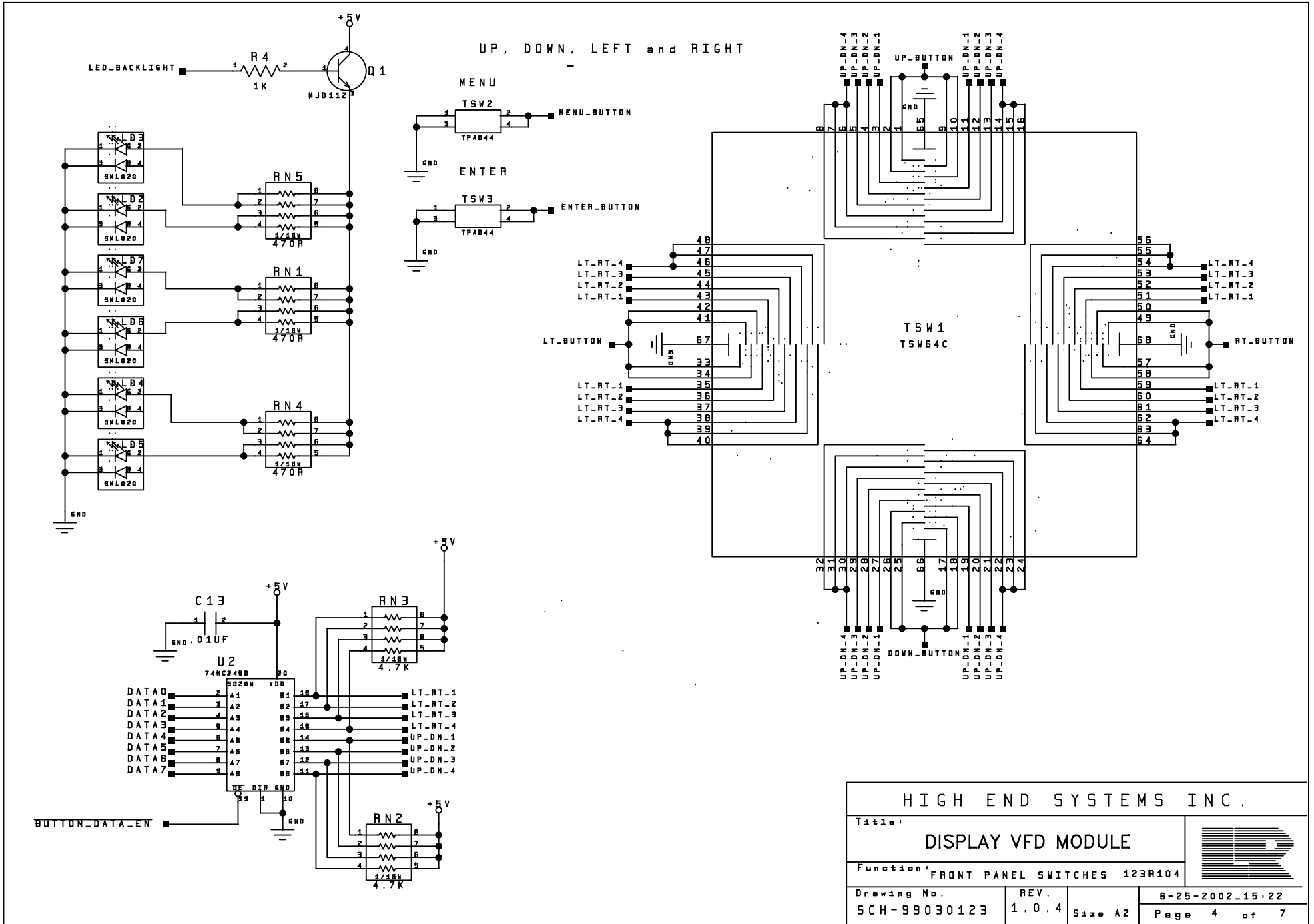
Title:		
DISPLAY VFD MODULE		
Function:		123R104
Drawing No.	REV.	Designed:
SCH-99030123	1.0.4	Scott Ingham
Drawn: DRAWER		Approved:
6-25-2002_15.22	Size A2	Page 1 OF 7



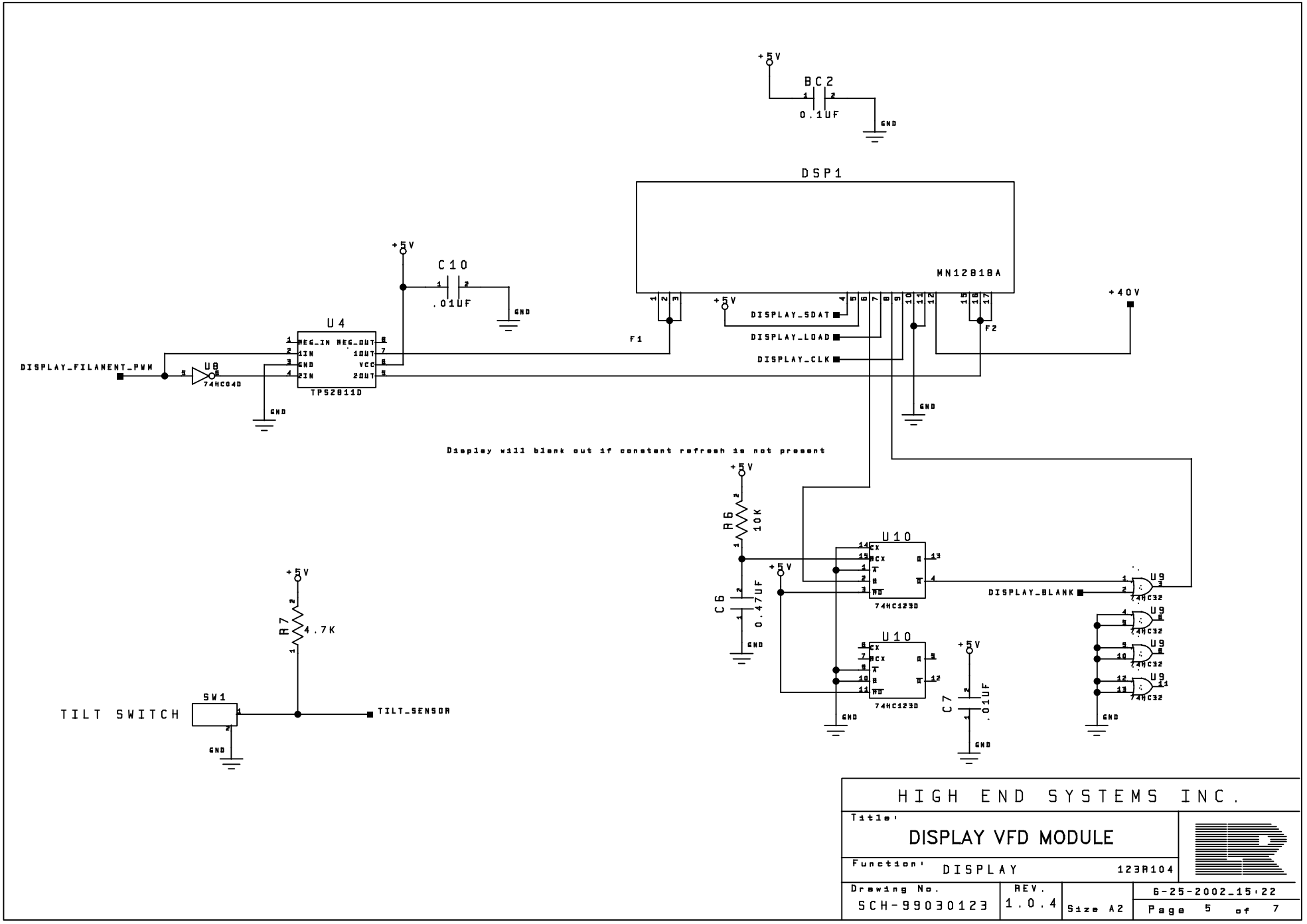
HIGH END SYSTEMS INC.			
Title:		DISPLAY VFD MODULE	
Function:		CPU	123R104
Drawing No.		REV.	6-25-2002_15.22
SCH-99030123	1.0.4	Size A2	Page 2 of 7



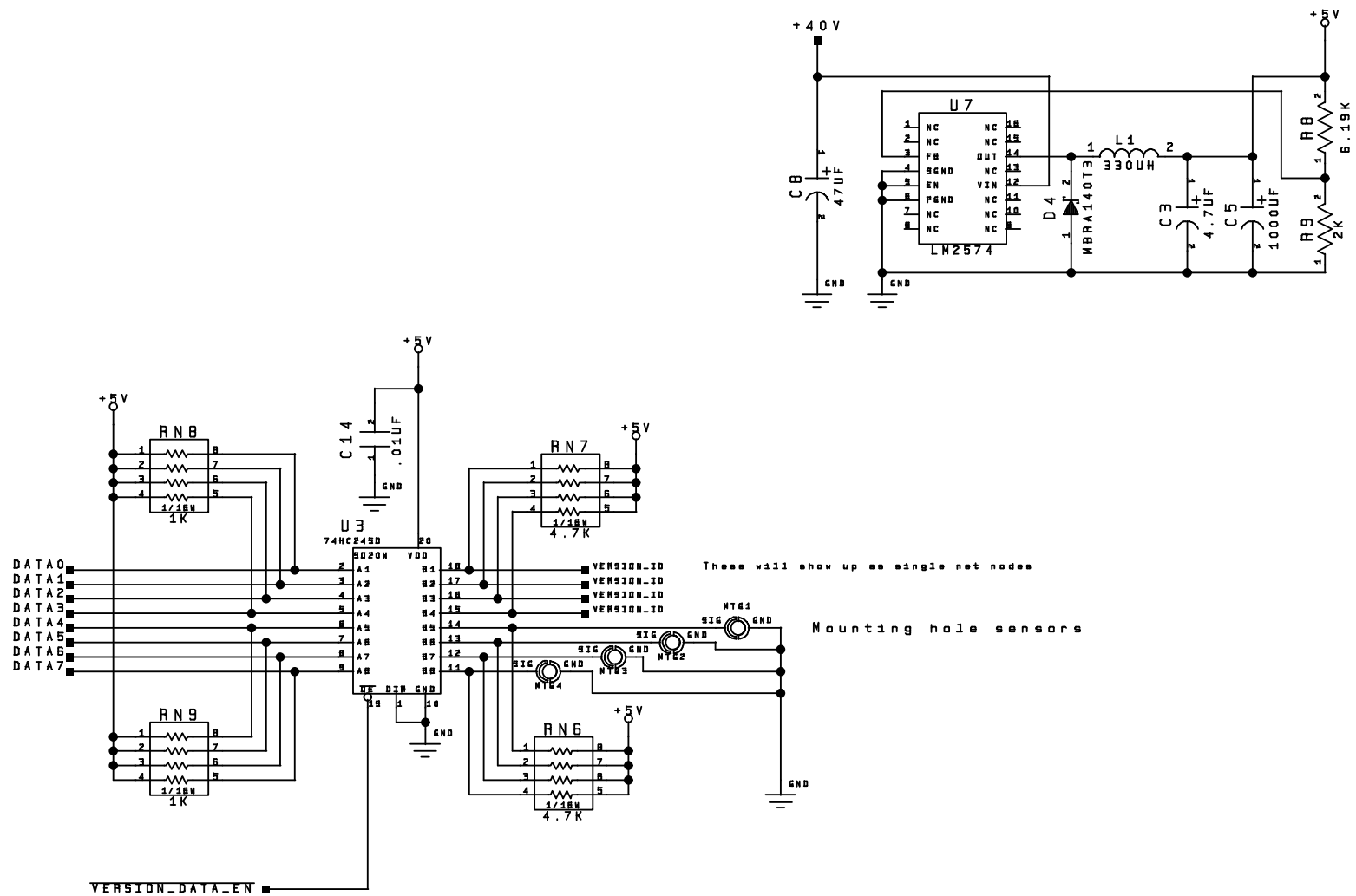
HIGH END SYSTEMS INC.			
Title:		DISPLAY VFD MODULE	
Function:		FPGA 1	123R104
Drawing No.	REV.	6-25-2002_15.22	
SCH-99030123	1.0.4	Size A2	Page 3 of 7



HIGH END SYSTEMS INC.			
Title:		DISPLAY VFD MODULE	
Function:		FRONT PANEL SWITCHES 123R104	
Drawing No.	REV.	6-25-2002.15.22	
SCH-99030123	1.0.4	Size A2	Page 4 of 7



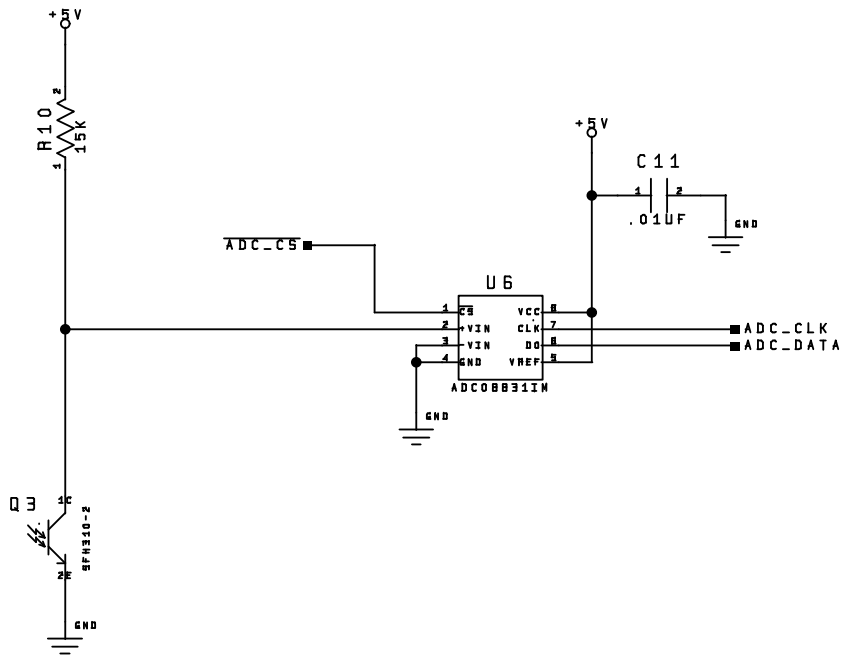
HIGH END SYSTEMS INC.			
Title:		DISPLAY VFD MODULE	
Function:		DISPLAY	123R104
Drawing No.	REV.	Size	6-25-2002-15.22
SCH-99030123	1.0.4	A2	Page 5 of 7



These will show up as single net nodes

Mounting hole sensors

HIGH END SYSTEMS INC.			
Title:		DISPLAY VFD MODULE	
Function:		POWER REGULATOR 123R104	
Drawing No.	REV.	6-25-2002.15.22	
SCH-99030123	1.0.4	Size A2	Page 6 of 7



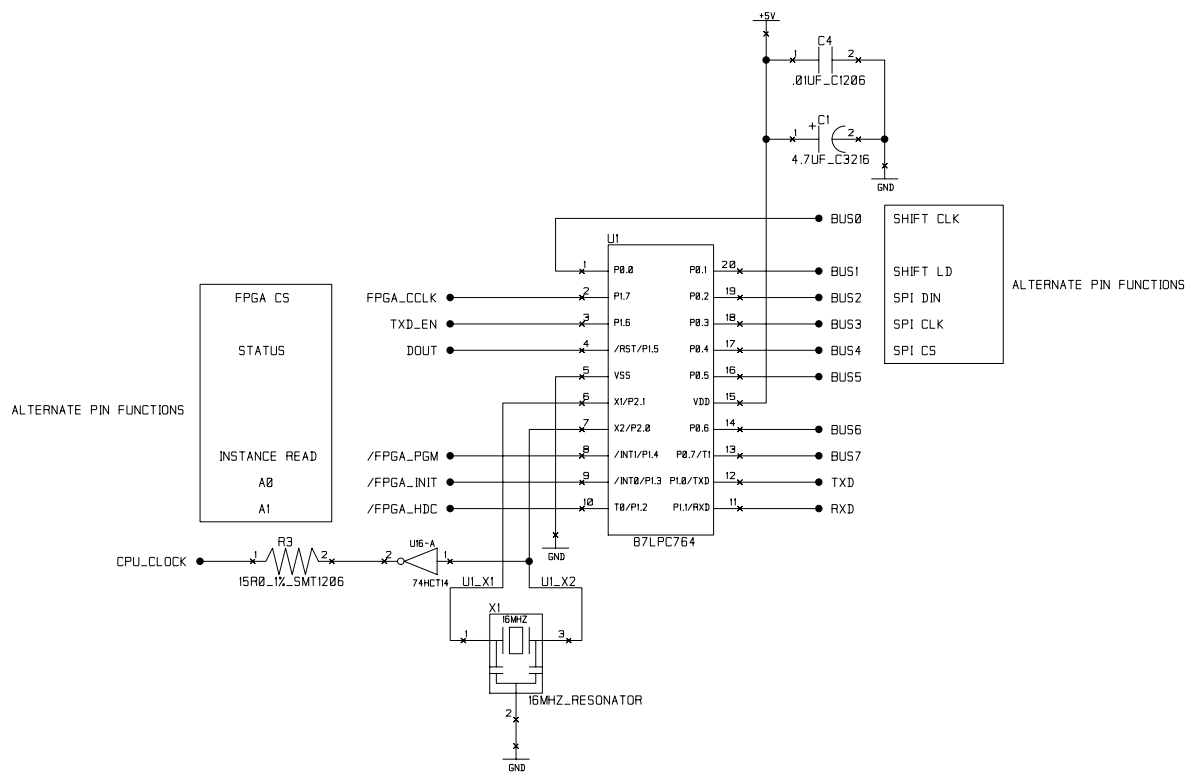
HIGH END SYSTEMS INC.


Title: DISPLAY VFD MODULE
 Function: LIGHT SENSOR 123R104



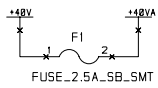
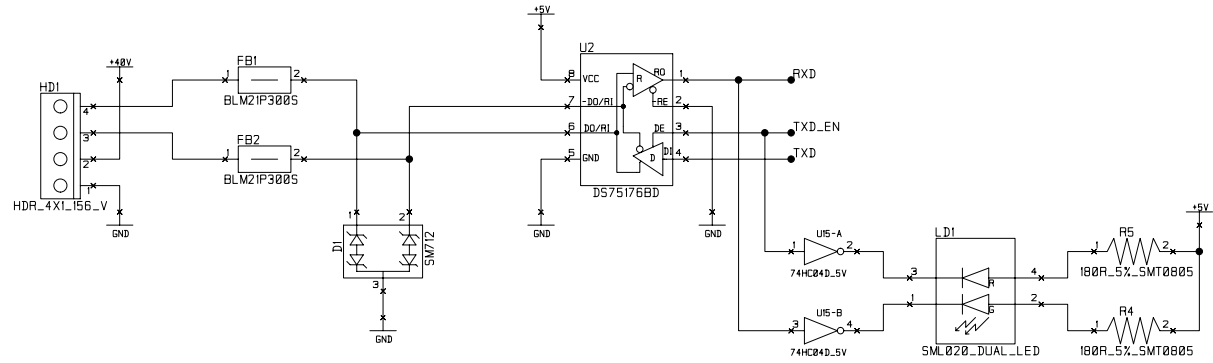
Drawing No. SCH-99030123	REV. 1.0.4	Size A2	6-25-2002_15.22 Page 7 of 7
-----------------------------	---------------	---------	--------------------------------

CPU

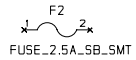


BARCO / HIGH END SYSTEMS		2105 GRACY FARMS LANE AUSTIN, TX 78758			
CPU		SIZE B	FSCM NO.	DWG. NO. 80010208EF	REV. 1.2
DRAWN K. Lowe	ISSUED 11-07-08	SCALE	DESIGN D. Peck	SHEET 2 of 9	


MODULE LINK



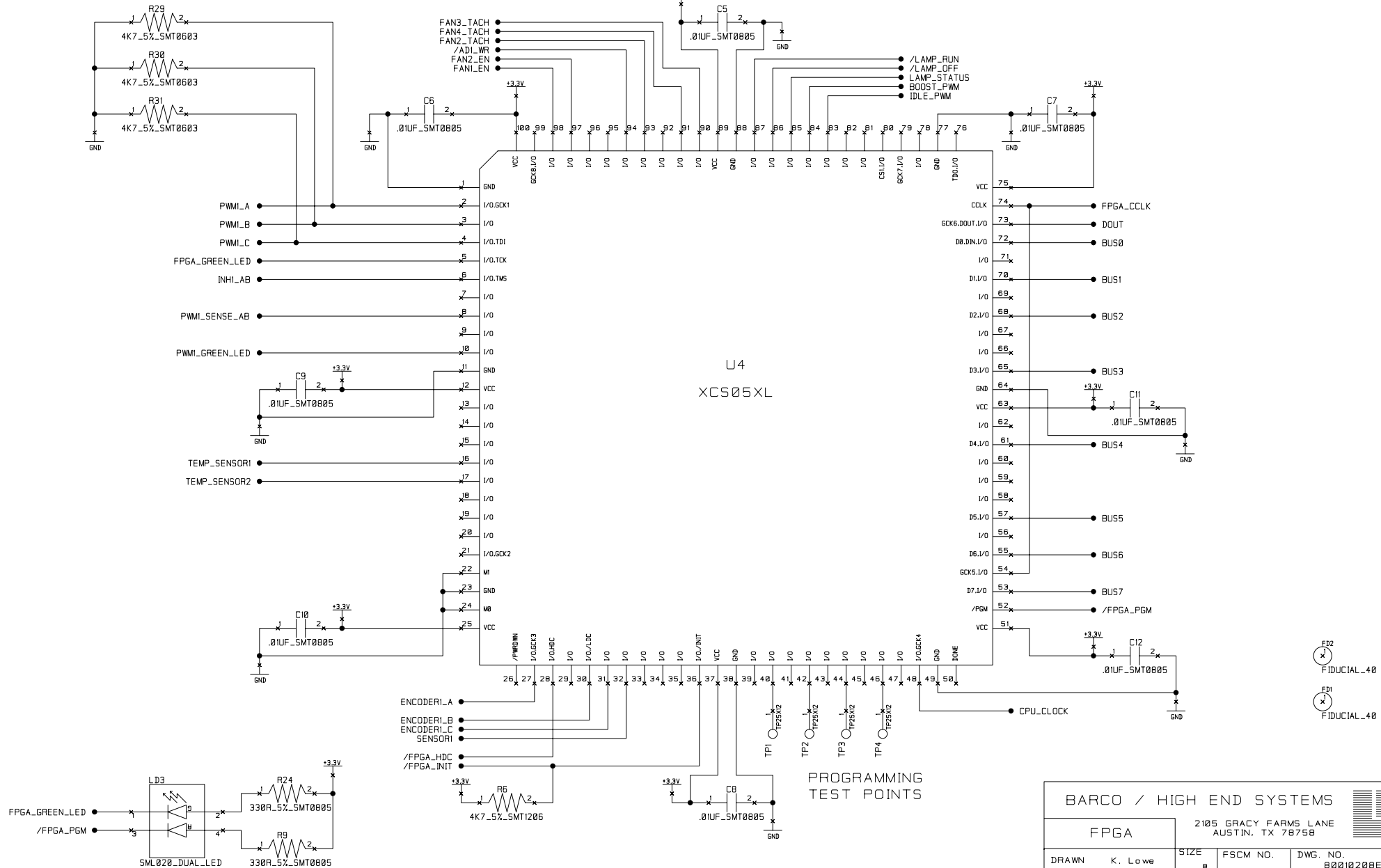
FUSE



SPARE FUSE

BARCO / HIGH END SYSTEMS		2105 GRACY FARMS LANE AUSTIN, TX 78758			
MODULE LINK		SIZE B	FSCM NO.	DWG. NO. 80010208EF	REV. 1.2
DRAWN K. Lowe	11-07-08	SCALE	DESIGN D. Peck	SHEET 3 of 9	

FPGA

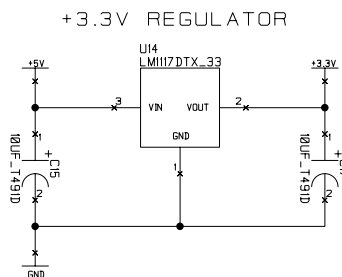
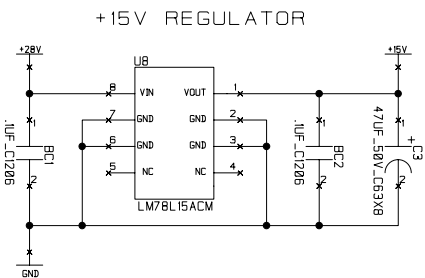
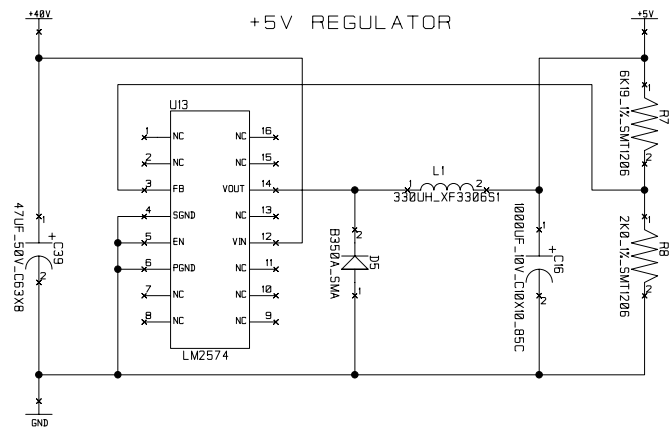
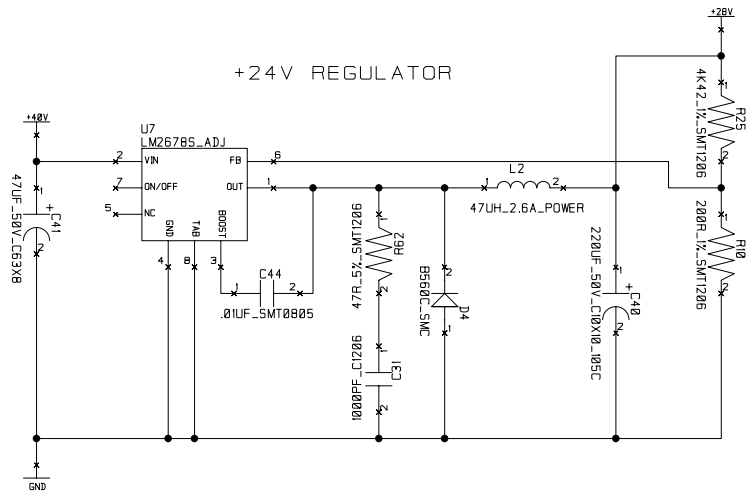


FD2
FIDUCIAL_40
FD1
FIDUCIAL_40

PROGRAMMING
TEST POINTS

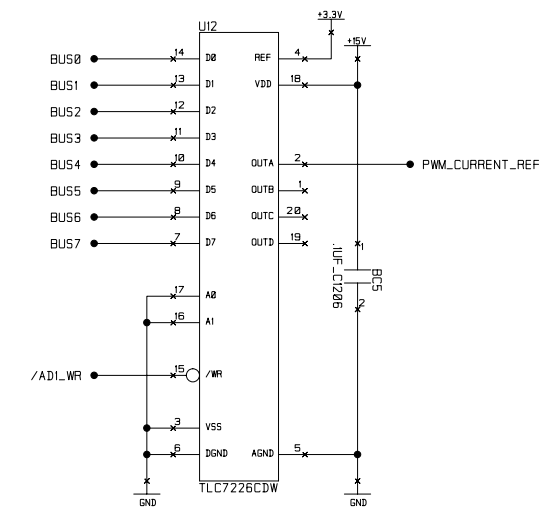
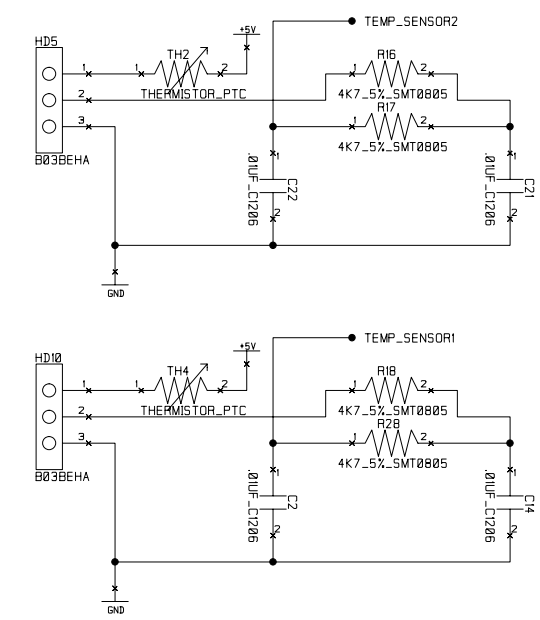
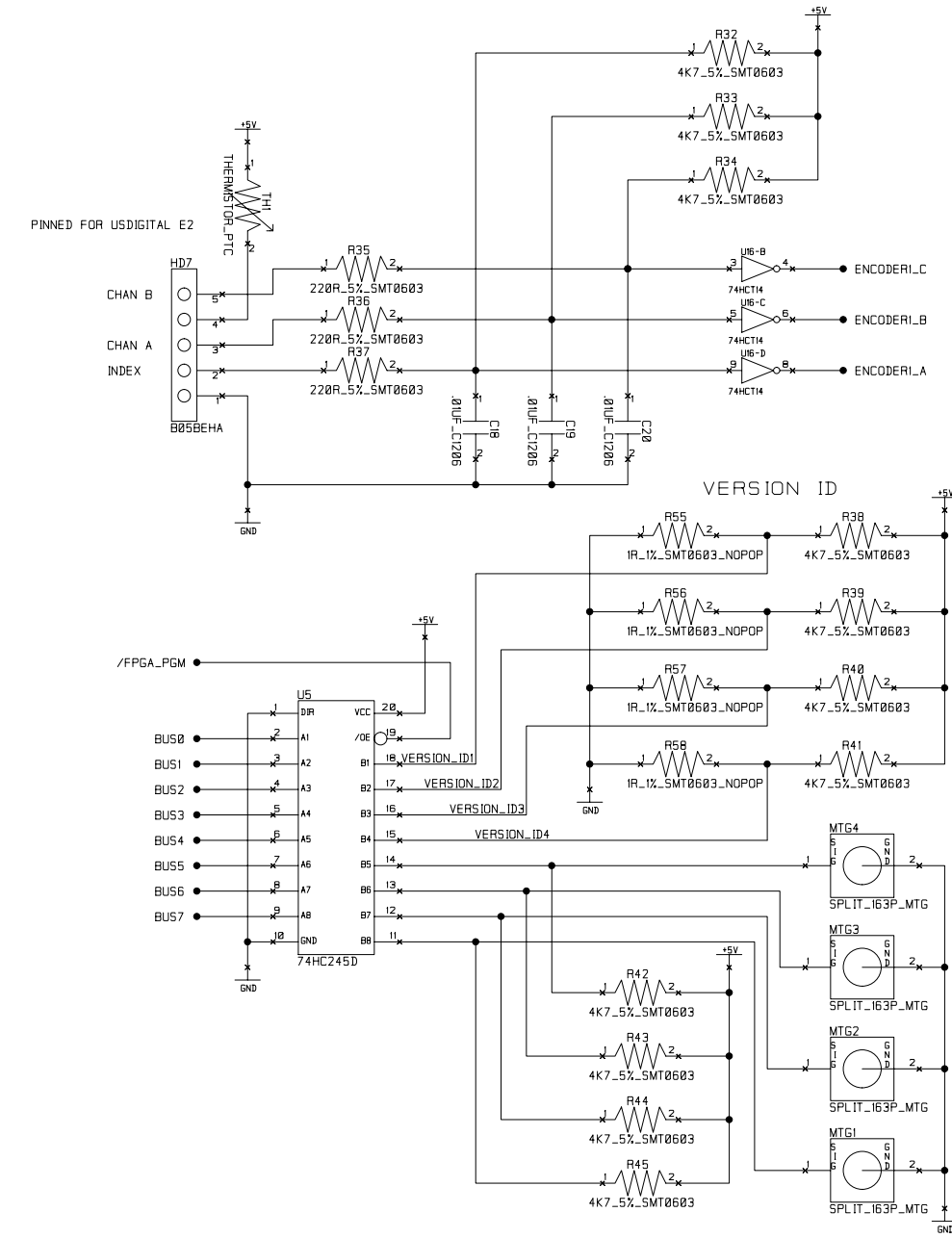
BARCO / HIGH END SYSTEMS		2105 GRACY FARMS LANE AUSTIN, TX 78758			
FPGA		SIZE	FSCM NO.	DWG. NO.	REV.
DRAWN	K. Lowe	B		80010208EF	1.2
ISSUED	11-07-08	SCALE	DESIGN D. Peck	SHEET	4 of 9

POWER



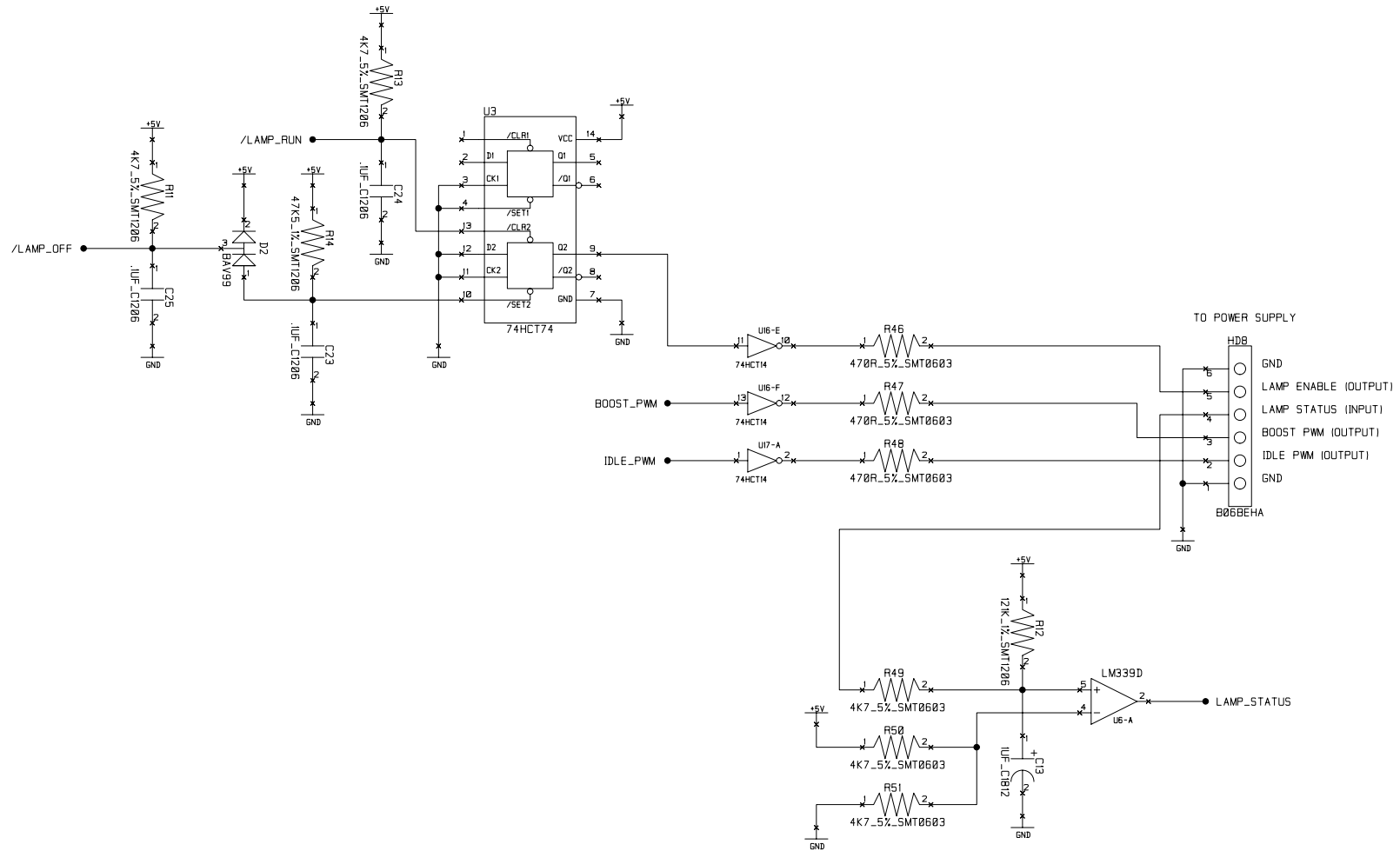
BARCO / HIGH END SYSTEMS		2105 GRACY FARMS LANE AUSTIN, TX 78758			
POWER					
DRAWN	K. Lowe	SIZE	FSCM NO.	DWG. NO.	REV.
ISSUED	11-07-08	B		80010208EF	1.2
		SCALE	DESIGN D. Peck	SHEET 5 of 9	

INTERFACE



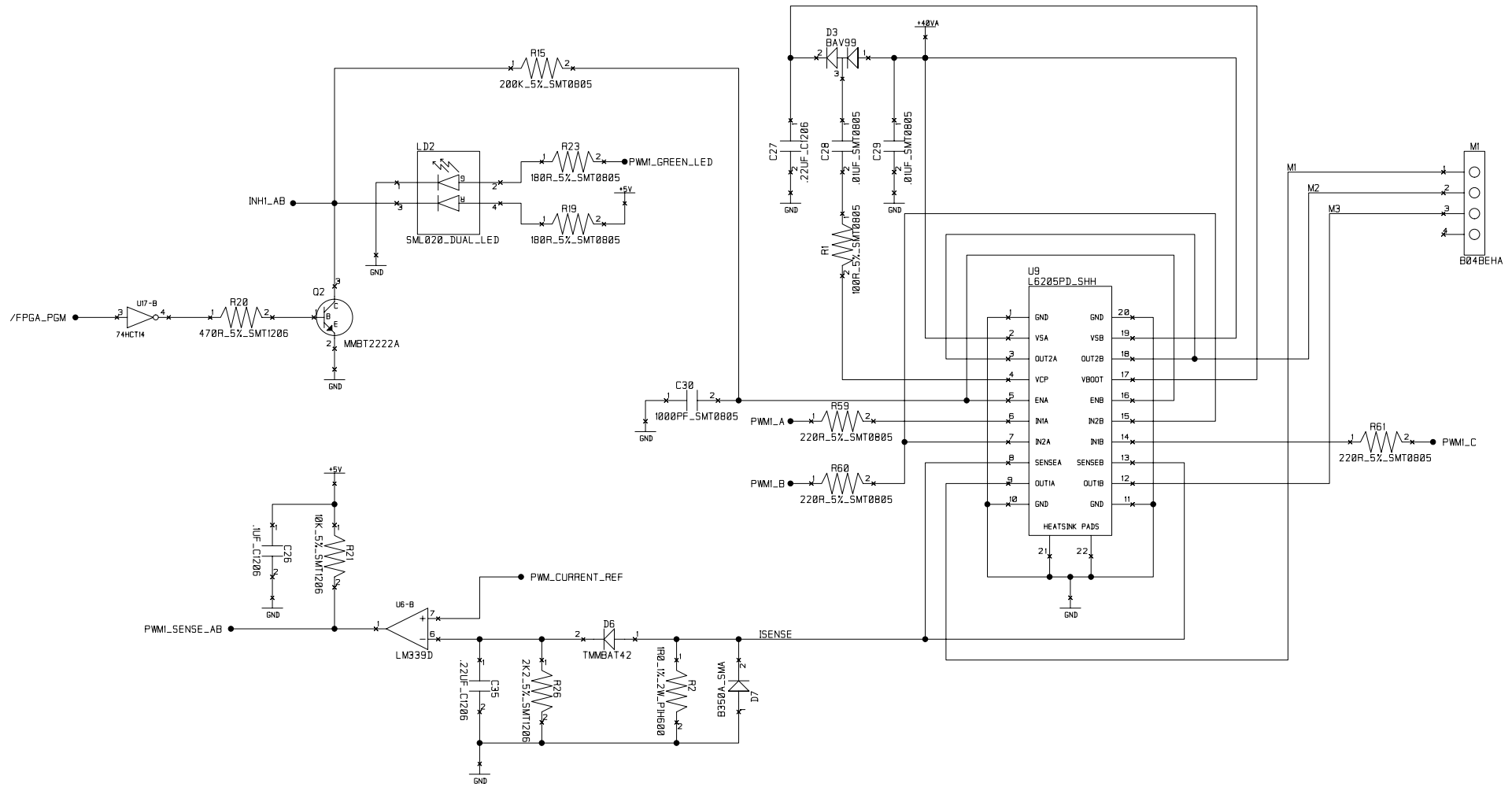
BARCO / HIGH END SYSTEMS		2105 GRACY FARMS LANE AUSTIN, TX 78758			
INTERFACE		SIZE	FSCM NO.	DWG. NO.	REV.
DRAWN	K. Lowe	B		80010208EF	1.2
ISSUED	11-07-08	SCALE	DESIGN D. Peck	SHEET	6 of 9

LAMP CONTROL



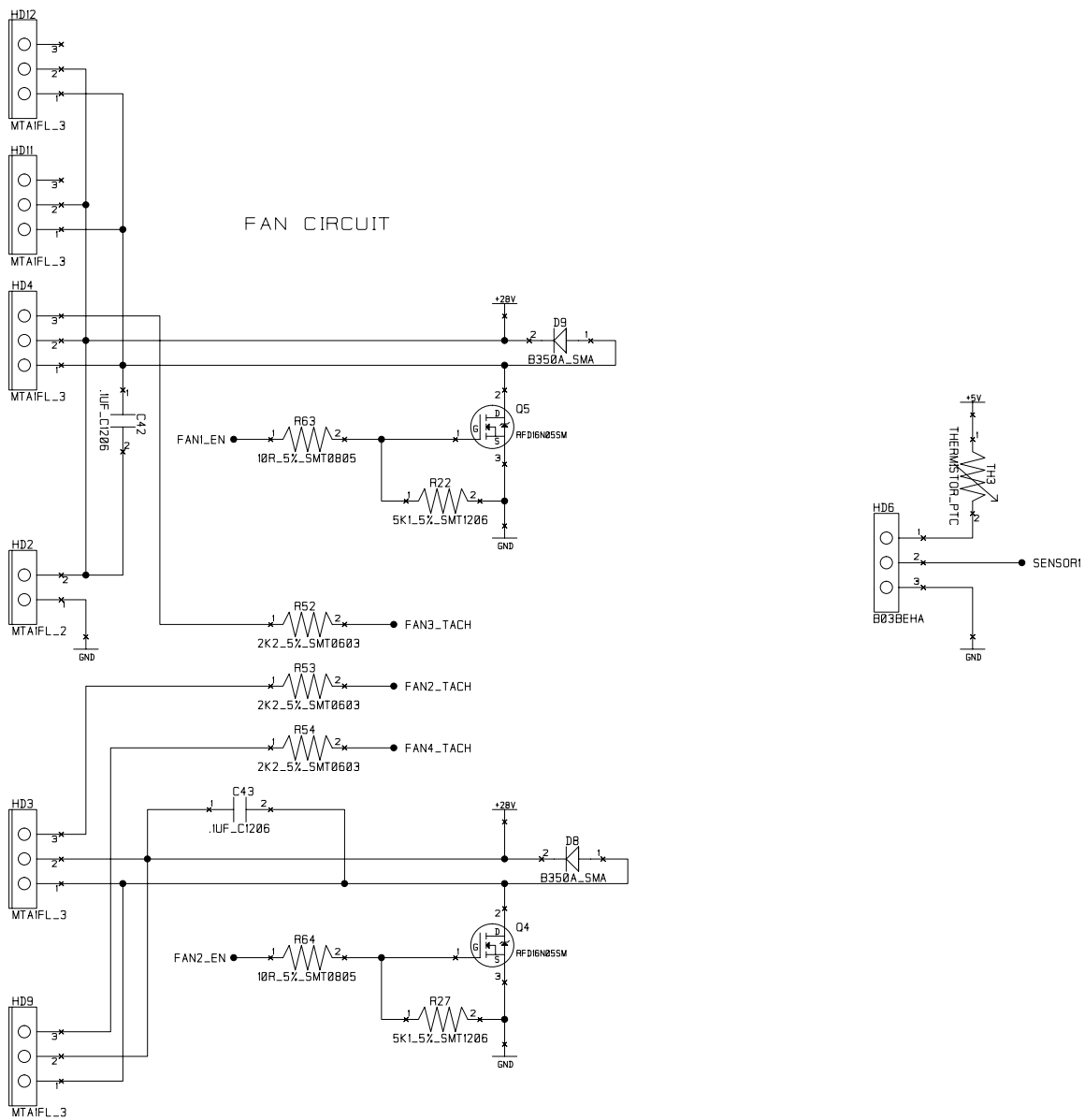
BARCO / HIGH END SYSTEMS		2105 GRACY FARMS LANE AUSTIN, TX 78758			
LAMP CONTROL		SIZE	FSCM NO.	DWG. NO.	REV.
DRAWN	K. Lowe	B		80010208EF	1.2
ISSUED	11-07-08	SCALE	DESIGN	D. Peck	SHEET 7 of 9

MOTOR DRIVER



BARCO / HIGH END SYSTEMS		2105 GRACY FARMS LANE AUSTIN, TX 78758			
MOTOR DRIVER		SIZE B	FSCM NO.	DWG. NO. 80010208EF	REV. 1.2
DRAWN K. Lowe	ISSUED 11-07-08	SCALE	DESIGN D. Peck	SHEET 8 of 9	

FAN CONTROL / TEMP SENSOR



BARCO / HIGH END SYSTEMS		2105 GRACY FARMS LANE AUSTIN, TX 78758			
FAN / TEMP		SIZE B	FSCM NO.	DWG. NO. 80010208EF	REV. 1.2
DRAWN K. Lowe	ISSUED 11-07-08	SCALE	DESIGN D. Peck	SHEET 9 of 9	

REVISION HISTORY

SCH REV	PCB REV	ECO NO.	DATE	COMMENT
-	-	-		

NOTES:


UNLESS OTHERWISE SPECIFIED:

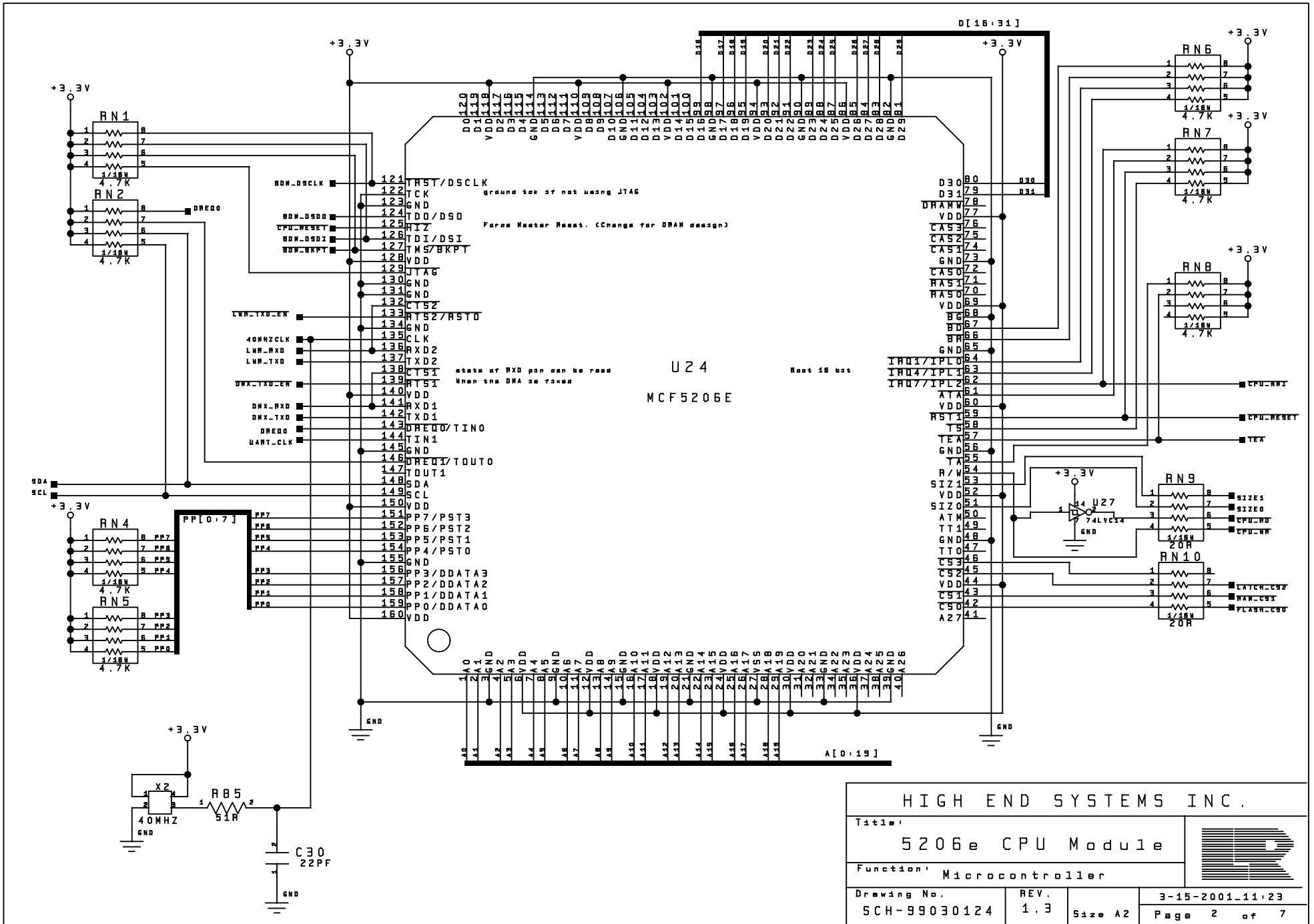
1. ALL RESISTOR VALUES ARE IN OHMS
2. ALL RESISTORS ARE 1/8 WATT 5% OR BETTER SMT 1206
3. CAPACITOR VALUES ARE IN PICO FARADS
4. ALL NON POLARIZED CAPACITORS ARE 50V OR BETTER
VALUES BELOW 470pF ARE NPO/COG TYPE 5%
VALUES 470pF TO 1000pF ARE X7R 10%
VALUES ABOVE 1000pF ARE Z5U +/- 20 %
5. ALL POLARIZED CAPACITORS ARE 20% OR BETTER

Copyright (c) 1994-2001 High End Systems, Inc. All rights reserved worldwide.

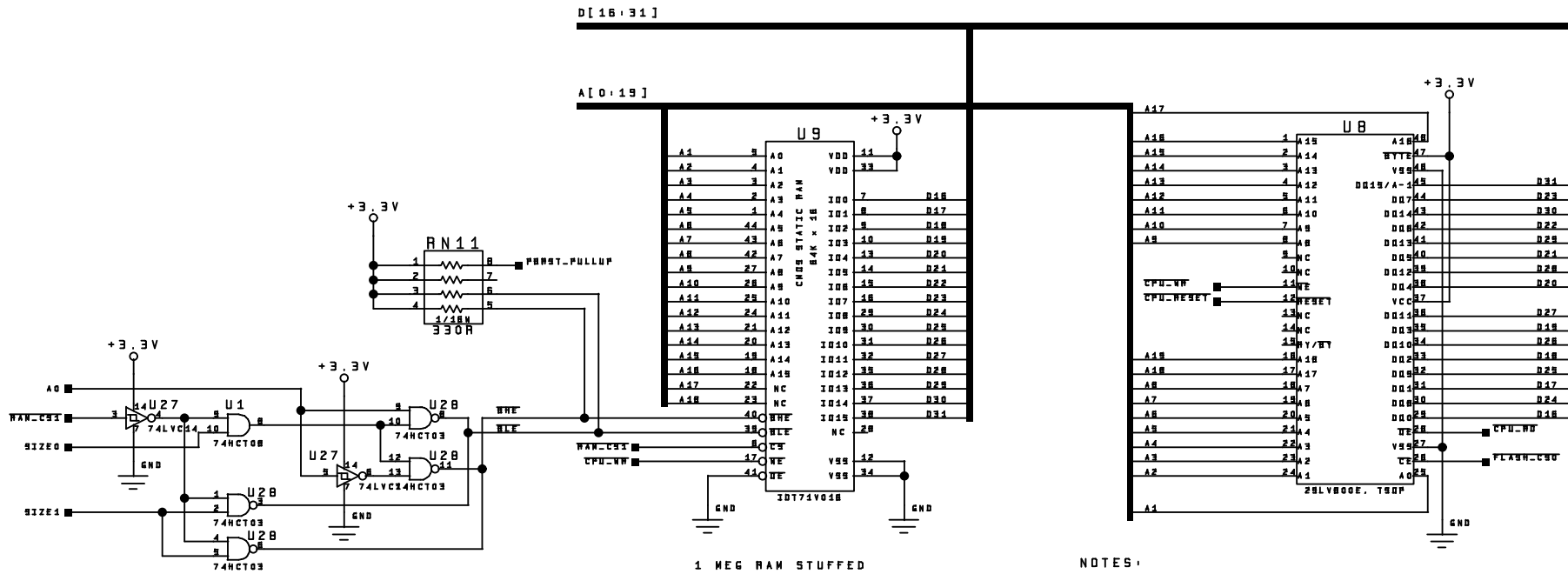
Name, Lightwave Research, the Lightwave Research logo, High End Systems and the High End Systems logo are registered trademarks of High End Systems, Inc. Trademarks and trade names of others may be used in this document to refer to either such other entities or to their products. High End Systems Inc. disclaims any proprietary interest or connection to such marks or entities.

HIGH END SYSTEMS INC.

Title:		
5206e CPU Module		
Function:		
Drawing No.	REV.	Designed:
SCH-99030124	1.3	SCOTT INGHAM
Drawn: MYERS		Approved:
3-15-2001-11.23	Size A2	Page 1 OF 7

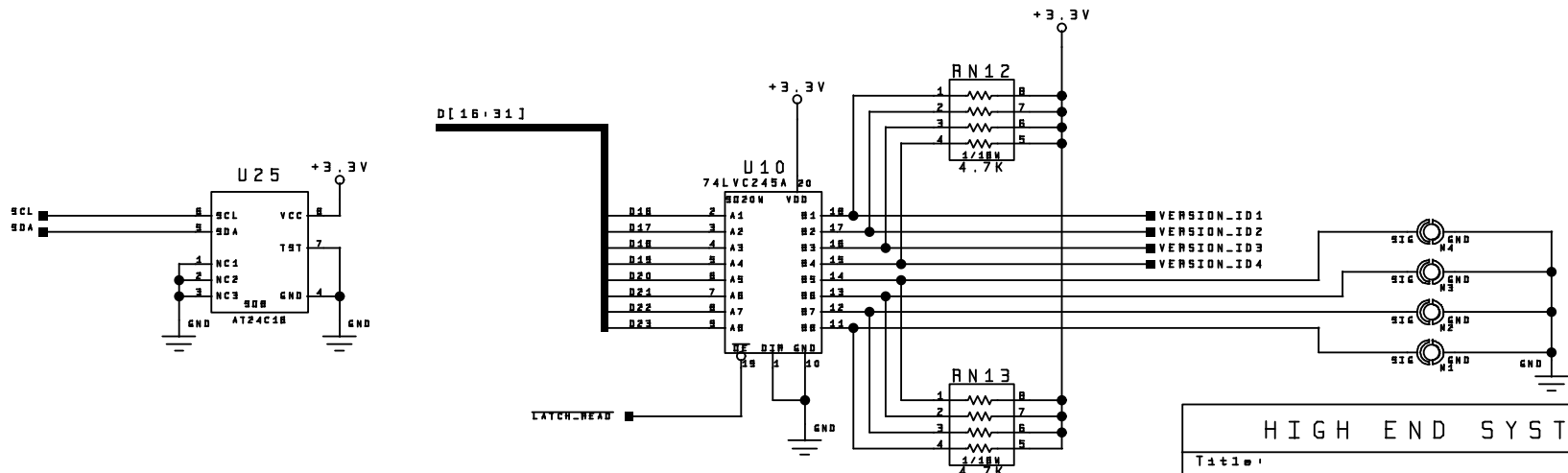


HIGH END SYSTEMS INC.			
Title:		5206e CPU Module	
Function:		Microcontroller	
Drawing No.	REV.	3-15-2001.11.23	
SCH-99030124	1.3	Size A2	Page 2 of 7

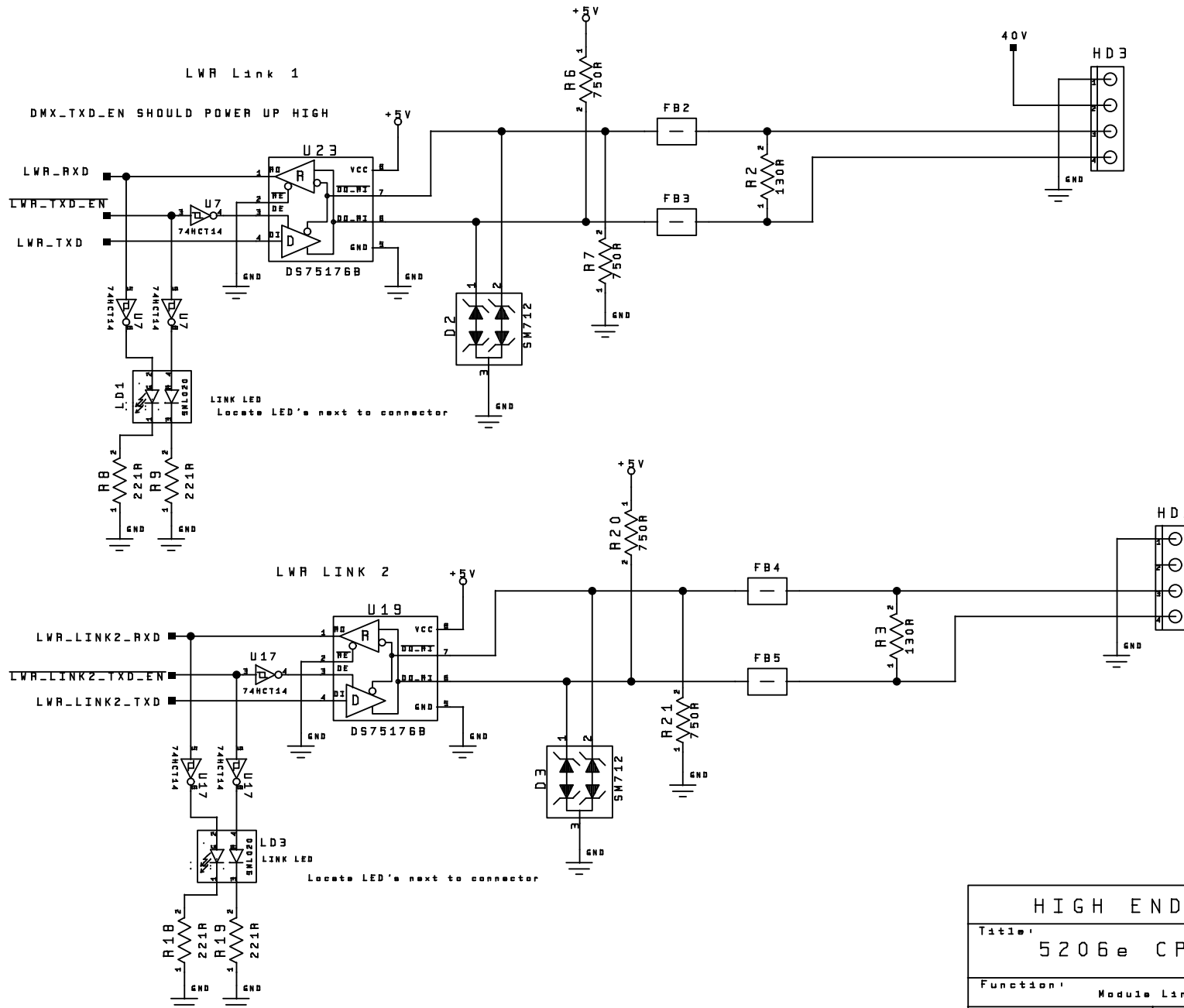


1 MEG RAM STUFFED
4MEG RAM CAN BE USED

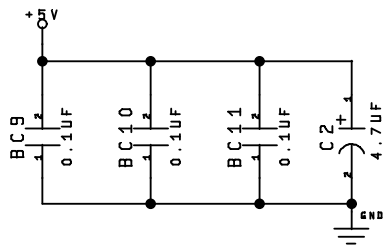
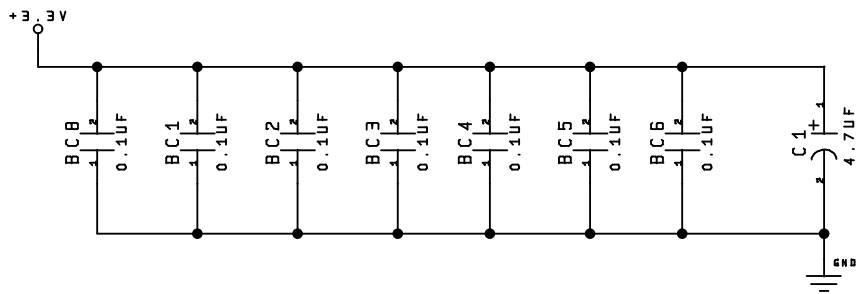
NOTES:
UB IS LAYED OUT FOR 8 MEG PART. 29LV400B MAY BE USED



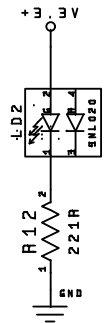
HIGH END SYSTEMS INC.			
Title:		5206e CPU Module	
Function:		MEMORY	
Drawing No.	REV.	3-15-2001.11.23	
SCH-99030124	1.3	Size A2	Page 3 of 7



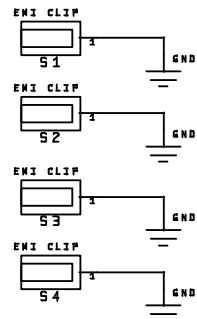
HIGH END SYSTEMS INC.			
Title:		5206e CPU Module	
Function:		Module Link	
Drawing No.	REV.	Size	3-20-2001-14-46
SCH-99030124	1.3	A2	Page 4 of 7



POWER LED

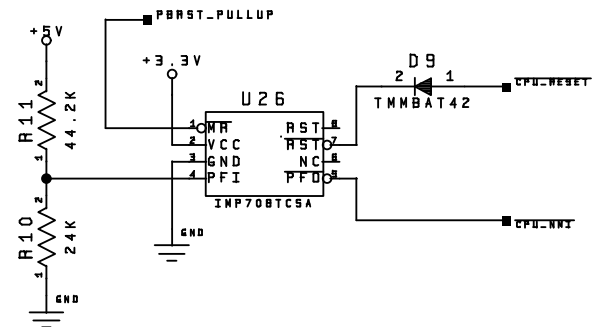


EMI COVER CLIPS

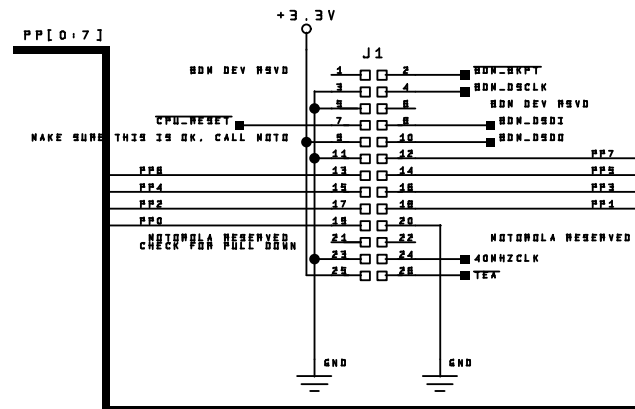


Mount an antistatic mat on all high speed logic so that the cover will dissipate over all 4 sides

CPU MONITOR



BDM CONNECTOR



HIGH END SYSTEMS INC.

Title: 5206e CPU Module

Function: SUPPORT CIRCUITS



Drawing No. SCH-99030124

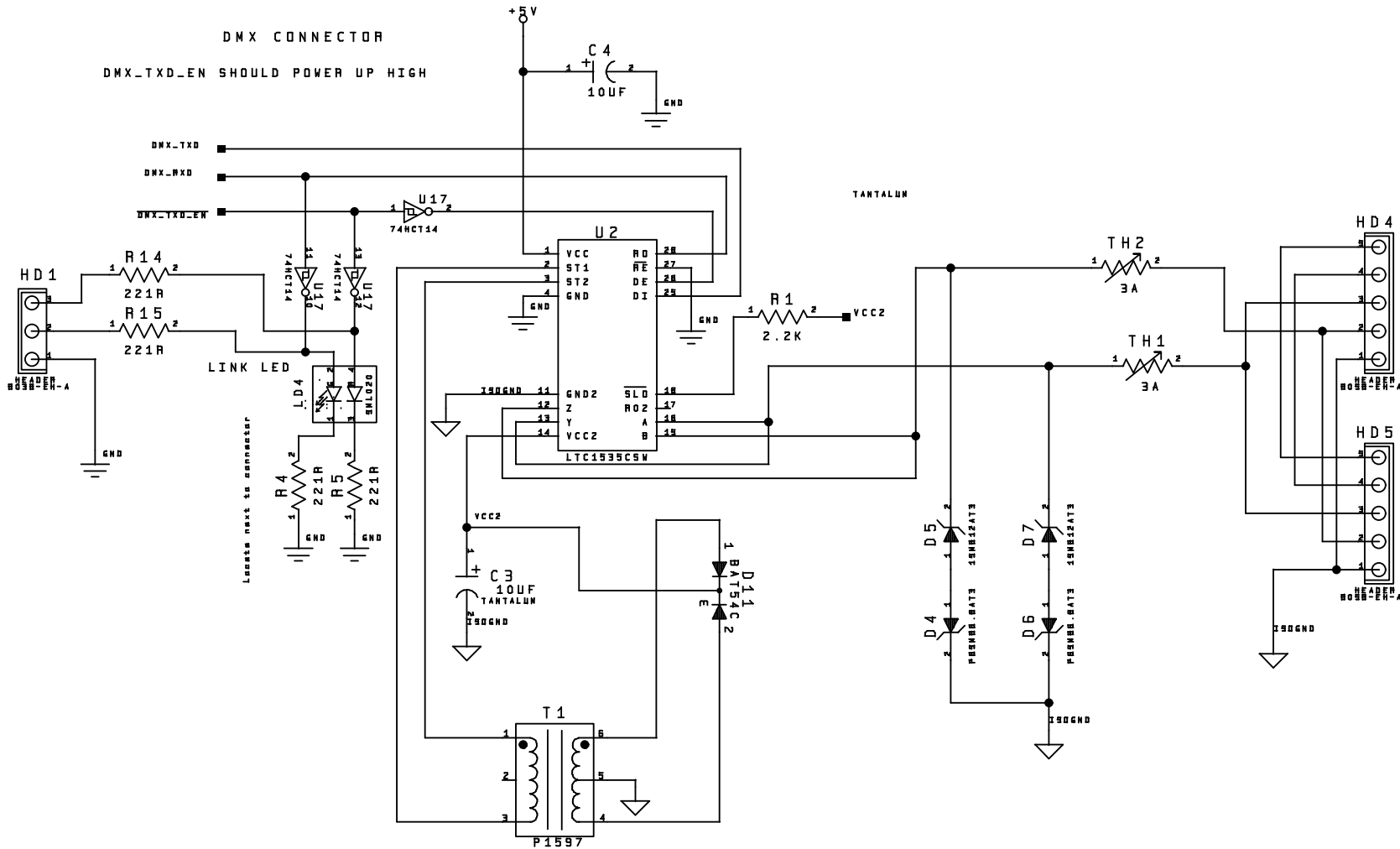
REV. 1.3

Size A2

3-15-2001.11.23

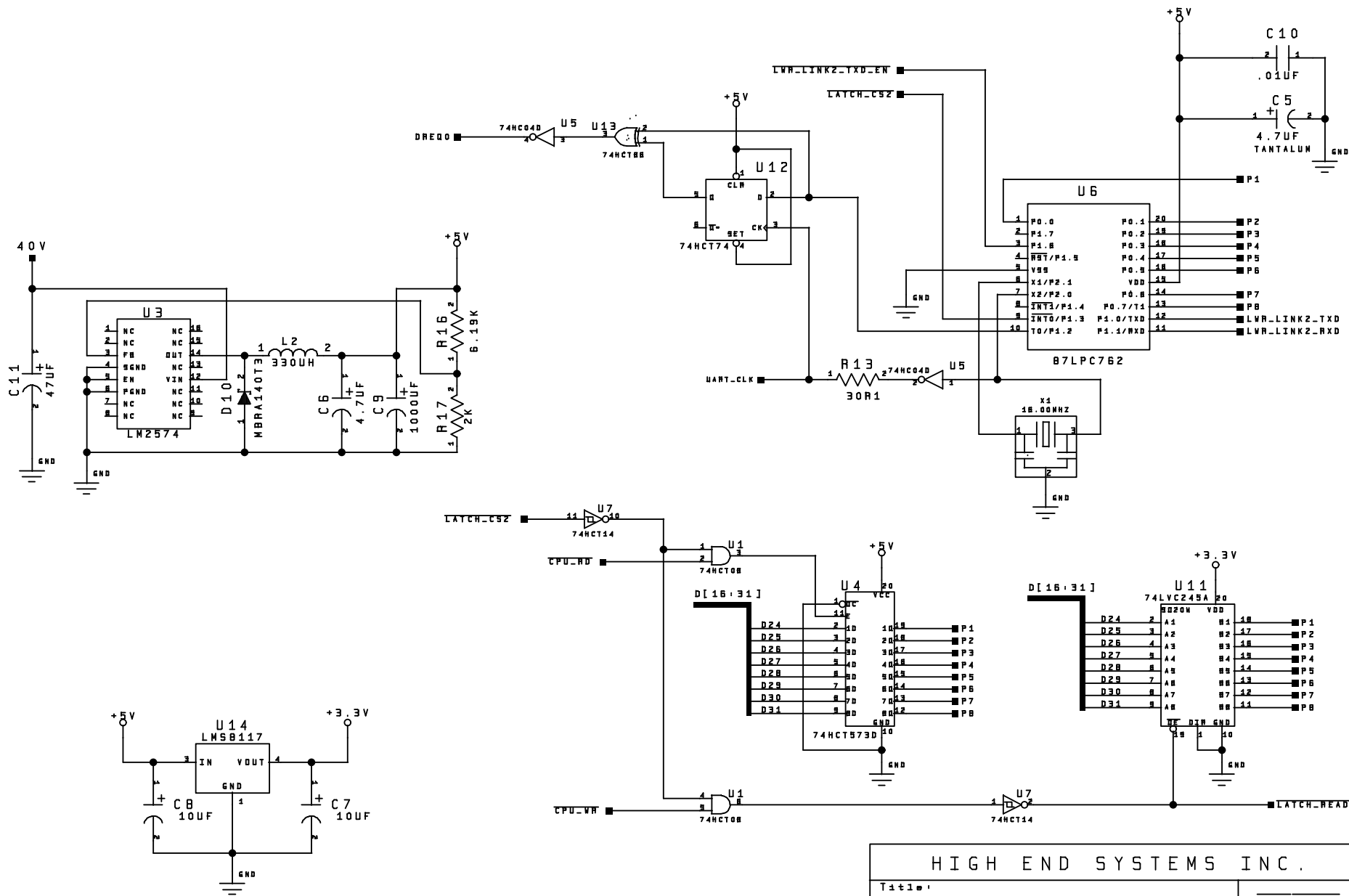
Page 5 of 7

DMX CONNECTOR
 DMX_TXD_EN SHOULD POWER UP HIGH



Leads next to connector

HIGH END SYSTEMS INC.			
Title:		5206e CPU Module	
Function:		DMX	
Drawing No.	REV.	Size	3-15-2001_11.18
SCH-99030124	1.3	A2	Page 6 of 7



HIGH END SYSTEMS INC.			
Title:		5206e CPU Module	
Function:		DMX UART // POWER	
Drawing No.	REV.	Size	3-20-2001.13.50
SCH-99030124	1.3	A2	Page 7 of 7